



88 Old Fort Road
Shoreham-By-Sea, BN43 5HB

£2,500,000

One of the most exceptional properties on the Shoreham coast. This detached beachfront house has impressive panoramic sea views and beautiful landscaped grounds to reflect the natural beachside location with direct access onto the beach. The house has a contemporary design to high specification throughout.

To the front of the property is a beach theme landscaped garden with wonderful water feature, ample off street parking leading to a large garage.

Inside the house is a large 34ft open plan kitchen living room with large south facing sliding doors overlooking the beach, a bespoke fitted kitchen and separate fitted utility room, downstairs W.c., south facing cinema room/lounge leading out onto the garden, further family room/music room and a good size bedroom, also on the ground floor is a luxury fitted shower room.

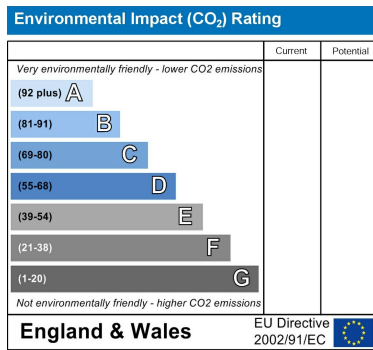
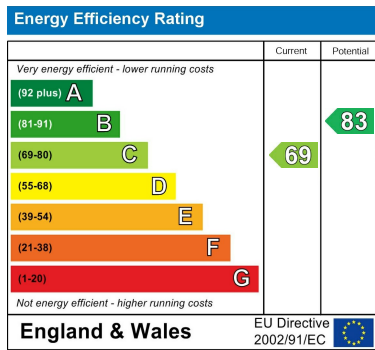
Rising to the first floor is a wonderful master bedroom with panoramic sea views, modern family bathroom, dual aspect second bedroom with en-suite bathroom and a good size third bedroom, from the landing there are stairs leading up to the loft room making it the perfect space for a home office or occasional room.

To the rear of the house the garden has a wooden decked area, beach pebbled area as well as a raised decked area all having a favoured southerly aspect with direct views and access to Shoreham Beach and English Channel, enclosed by high walls to both sides.

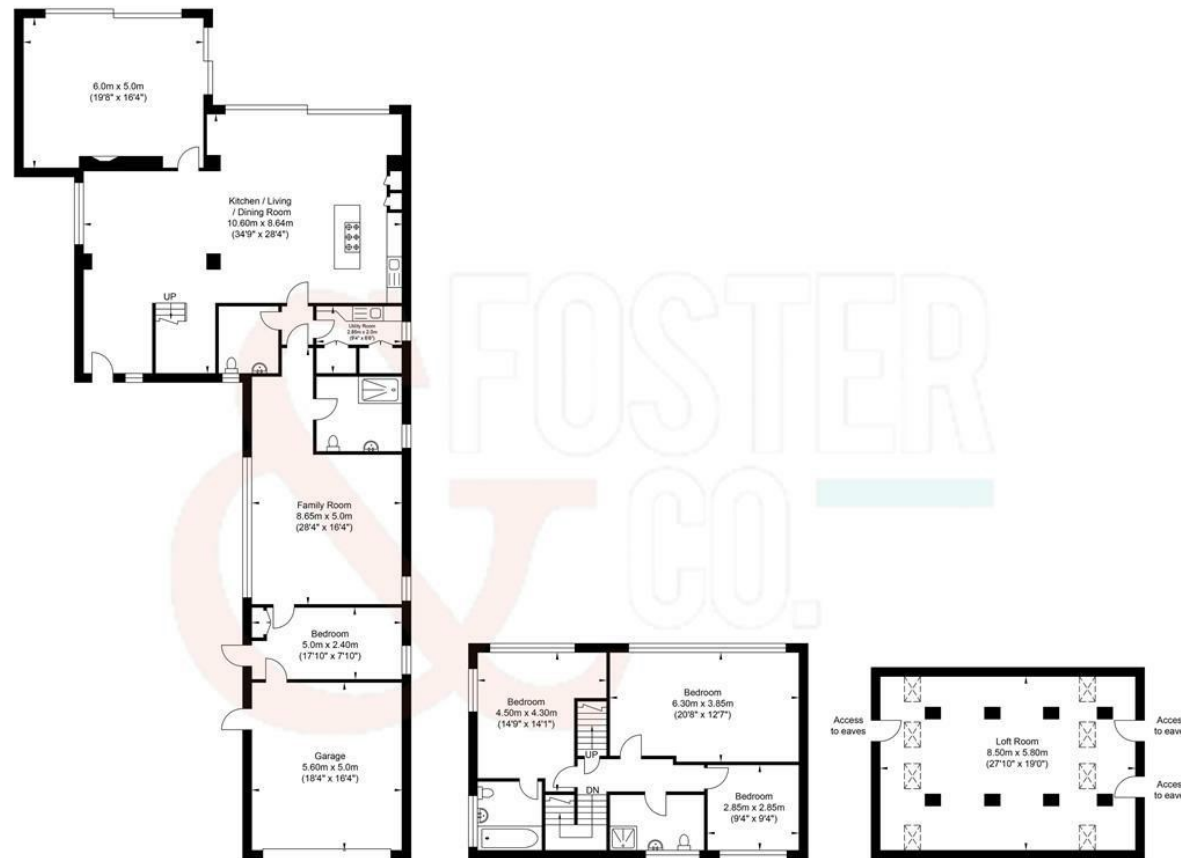
This remarkable home still offers potential to extend at the rear and add another floor. (subject to any necessary planning permissions) & having the added benefit of being chain free.



- Impressive modern detached house
- Direct Access From Garden Onto Shoreham Beach
- Double Garage & Private Driveway
- Potential To Extend & Add Another Level
- Modern Kitchen
- Direct Sea Views
- 4 Double Bedrooms
- Chain Free
- Luxury Italian Bathrooms
- Fantastic Entertaining Space



Old Fort Road, Shoreham



Ground Floor
Approximate Floor Area
2087.66 sq ft
(193.95 sq m)

First Floor
Approximate Floor Area
760.14 sq ft
(70.62 sq m)

Second Floor
Approximate Floor Area
530.66 sq ft
(49.30 sq m)



Approximate Gross Internal Area = 313.87 sq m / 3378.46 sq ft
Illustration for identification purposes only, measurements are approximate, not to scale.
Copyright GDImpact 2021